

UbiSwitch BB-UBS-A-1

The ultimate solution to rugged, ultra compact, high speed networking.

Dimensions **42mm x 42mm x 9.8mm**

Voltage Range **5-60V**

Ethernet Ports **3 x 10GBASE-T
+ 8 1GBASE-T**

Operating Temperature **-40 to +85°C**

MIL-STD-810G Compliant
High and Low Pressure Tolerant



Need NDAA or EO13981 Compliance?

All of our boards are available in fully NDAA compliant versions, with supply chains based solely in the USA. MOQs may apply.

Contact Us

 info@botblox.io

Kapek Ltd (Trading as BotBlox)
4 Pavilion Court 600 Pavilion Drive,
Northampton Business Park,
Northampton,
England
NN4 7SL

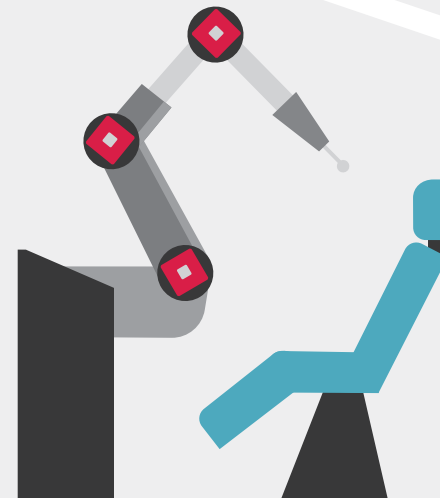
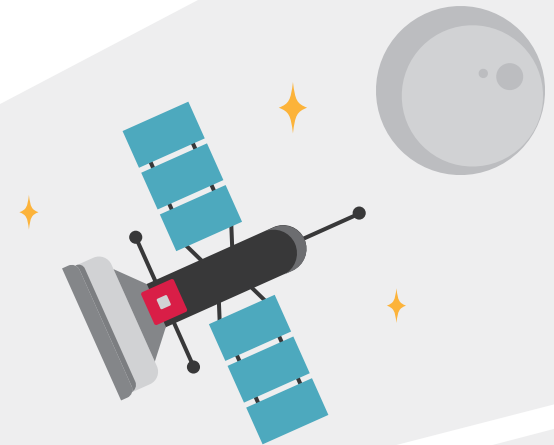
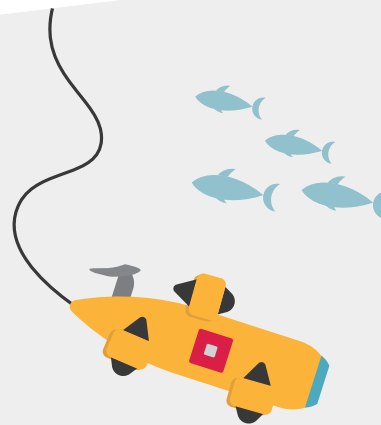
Follow Us



botblox.io



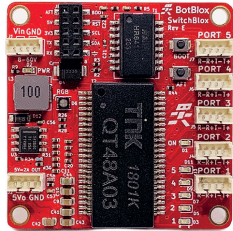
Solving big problems by going small



Standard Series

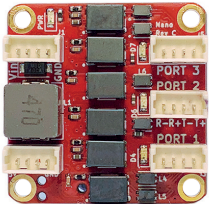
Ultra compact ethernet switches for industrial and robotic applications

10/100M Switches



SwitchBlox BB-SWB-E-1

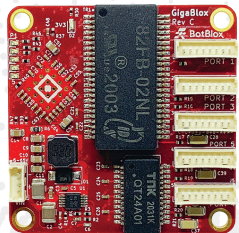
Dimensions	44.5mm x 44.5mm x 11.3mm
Voltage Range	5-60V
Ethernet Ports	5 x 10/100Mb
Operating Temperature	0 to +70°C



SwitchBlox Nano BB-SWN-C-1

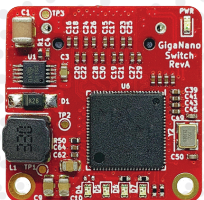
Dimensions	25.5mm x 25.5mm x 7.23mm
Voltage Range	5-45V
Ethernet Ports	3 x 10/100Mb
Operating Temperature	0 to +70°C

1G Switches



GigaBlox BB-GGB-C-1

Dimensions	45mm x 45mm x 15.98mm
Voltage Range	5.1-60V
Ethernet Ports	5 x 10/100/1000Mb
Operating Temperature	0 to +85°C



GigaBlox Nano BB-GGN-A-1

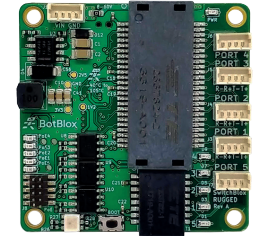
Dimensions	26mm x 26mm x 8mm
Voltage Range	5-60V
Ethernet Ports	4 x 10/100/1000Mb
Operating Temperature	0 to +85°C

Rugged Series

Ultra compact, rugged ethernet switches for challenging environments

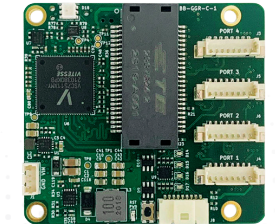
SwitchBlox **RUGGED** BB-SWR-F-1

Dimensions	44.5mm x 44.5mm x 11.17mm
Voltage Range	5-60V
Ethernet Ports	5 x 10/100Mb
Operating Temperature	-40 to +105°C



GigaBlox **RUGGED** BB-GGR-C-1

Dimensions	50mm x 55mm x 16.2mm
Voltage Range	8.5-60V
Ethernet Ports	4 x 10/100/1000Mb
Operating Temperature	-40 to +100°C

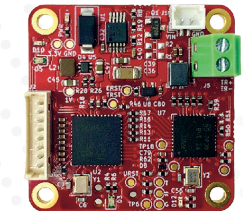


SPE

Single Pair Ethernet Transparent Bridges

SPEBlox BB-SPE-F-1

Dimensions	30mm x 30mm x 11mm
Voltage Range	5-40V
Ethernet Ports	1 x 1GBASE-T + 1 x 1GBASE-T1
Operating Temperature	-40 to +85°C



SPEBlox Long BB-SPL-A-1

Dimensions	31mm x 31mm x 17mm
Voltage Range	5-60V
Ethernet Ports	1 x 10BASE-T + 1 x 10BASE-T1L
Operating Temperature	-40 to +85°C

